

imber™

PERFORMANCE ATHLETIC FLOORING



WEIGHT ROOM & ARENA ATHLETIC FLOORING

Imber™ specializes in high-performance: dissipating impact and resisting cuts and dents in skate, weightlifting, and intense training environments. Imber™'s vulcanized, dual-layer construction has unparalleled resilience and traction. The anti-microbial and non-porous surface keeps your floors cleaner.

PERFECT FOR

- WEIGHT ROOMS
- FITNESS CENTRES
- ICE RINKS
- HIGH TRAFFIC ATHLETIC FACILITIES

individual sizes

- 39.4" x 39.4" (1.0 m x 1.0 m)
- 37.7" x 37.7" (0.96 m x 0.96 m)*
- 4' x 30' (1.22 m x 9.14 m)
- 4' x 50' (1.22 m x 15.24 m)**

* interlocking tiles
** 6 mm only
1 m x 1 m x 10 mm stocked, other sizes and thicknesses are special order

face style

Smooth with
Colour Streaks

thickness

- 1/4" (6 mm)
- 5/16" (8 mm)
- 3/8" (10 mm)

colour(s)

5 available

warranty

Athletic Facilities - 10 year
Ice Arenas - 5 year



edmonton
vancouver
toronto
edgewoodgroup.ca

CALL FOR DETAILS OR TO REQUEST A SAMPLE

1.800.668.1776

P 780.466.2084 • F 780.468.9104
E inquiries@edgewoodgroup.ca



construction

Vulcanized recycled and virgin rubber

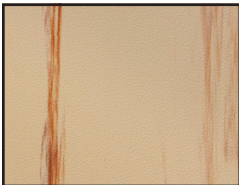
recycled content

55% recycled content in base layer

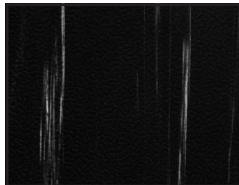
total weights

1 m x 1 m: 23–38 lb/tile (10.4–17.2 kg/tile)
37.7" x 37.7": 21–31 lb/tile (9.5–14.1 kg/tile)
4' x 30': 2.4–3.2 lb/sq. ft (1.17–15.6 kg/m²)
4' x 50': 1.8 lb/sq. ft (8.8 kg/m²)

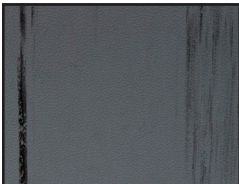
SWATCHES



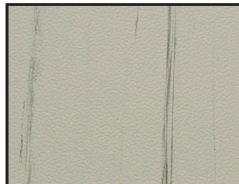
DAWN



ECLIPSE



EVE



MOON



UMBRA

